

*Exclusive*

# DIGITAL SIGNAGE

*package*



**OSI GROUP**

Partners in Your Success

A NEW  
**WAITING ROOM**  
EXPERIENCE

mediflex® elite 1 day contact lenses are  
**net plastic neutral.**<sup>1</sup>

mediflex® elite 1 day contact lenses

<sup>1</sup> CooperVision data on file 2020. Sustainability report. mediflex® 1 day 1st & S. Warning: Do not expose contact lenses to water while wearing them.



SHOW OFF YOUR **PRODUCTS & SERVICES** AND YOUR PRACTICE WILL SEE THE BENEFITS

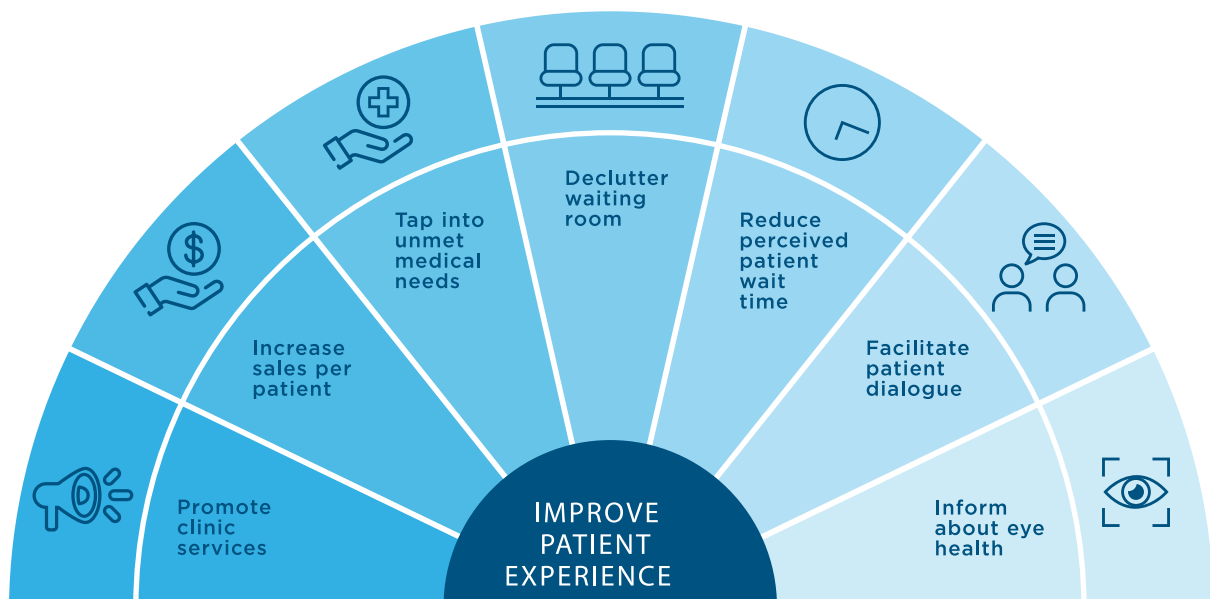


**YOUR WAITING ROOM OFFERS A GREAT OPPORTUNITY TO TRANSFORM YOUR PATIENT EXPERIENCE.**

OSI's exclusive **DIGITAL SIGNAGE SOLUTION** allows you to showcase your clinic, the products you offer and educate waiting patients on eye health. As a result, you will facilitate patient dialogue, meet otherwise unmet needs and increase sales per customer.

Having a **DIGITAL SIGNAGE SOLUTION** in place also declutters your waiting room and reduces patient's perceived waiting time. You will be one step closer to maximizing your patient experience before their exam even starts.

**YOUR WAITING ROOM OFFERS THE OPPORTUNITY TO:**







## CREATE YOUR VERY OWN **CUSTOMIZED PLAYLIST**

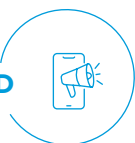
### ESSENTIALS



#### Plug & Play Technology

- 2 personalized clinic slides
- Choice of supplier videos
- Choice of eye health videos

### INFORMED



#### Choice of

- Local news feed
- International news feed
- Local weather

### CONNECTED



#### Choice of

- Facebook likes
- Twitter feed
- Instagram gallery

## CHOOSE THE **RIGHT PLAN** FOR YOUR CLINIC

### ESSENTIALS

Our Essentials package gives you access to our entire video library as well as personalized slides.

**\$40\* /month**

**\$50\* /month for non-members**

### INFORMED

The Informed package includes all the Essentials package items and adds news feeds to your screens.

**\$50\* /month**

**\$60\* /month for non-members**

### CONNECTED

The Connected package includes all the Essentials and Informed packages items and adds your social media feeds to your screens.

**\$60\* /month**

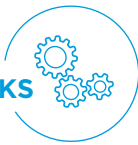
**\$70\* /month for non-members**

Starter kit and installation/configuration required: \$400 for 1 screen.  
\*Per screen.



**OSI GROUP**  
Partners in Your Success

## HOW IT WORKS



The digital signage package offers plug & play technology as well as customizable playlists easily managed by your team. It's as simple as plugging in an HDMI streaming device into your television screen. Your customized playlist will be broadcasted via your Wi-Fi connection.

## PREREQUISITES



The following equipment is required: a television screen with an available HDMI connection, a functional Wi-Fi connection accessible from the screen's location and an available, functional electrical outlet behind the screen or nearby (within 1 metre or 3 feet).



For more information, visit [tv.opto.com](http://tv.opto.com) or contact us at [support@optosys.ca](mailto:support@optosys.ca).